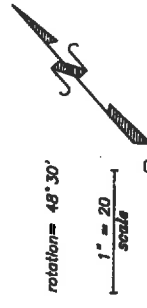


POR. PUEBLO LANDS

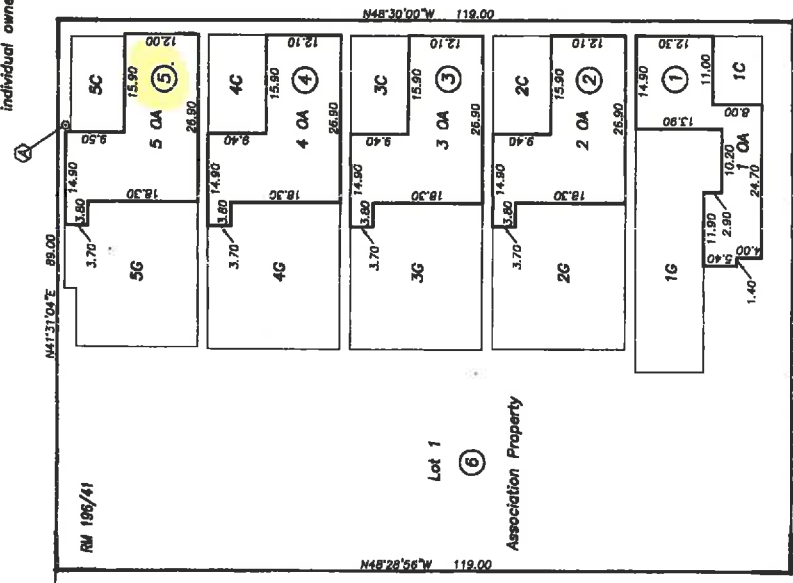
029-59

NOTE:
 "Association Property;" (pcl 6) is defined as Module A consisting of all of the real property in a 3-dimensional airspace volume excluding all units and what is in Module B.
 "Common Area" is defined as Module B consisting of a horizontal airspace between elevation of 100' and 110' which is owned in common by the individual owners of the units.

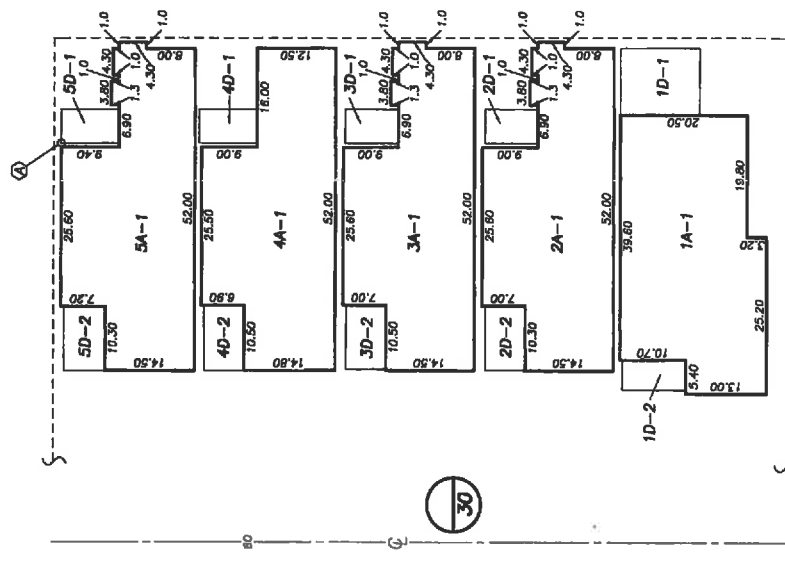


22

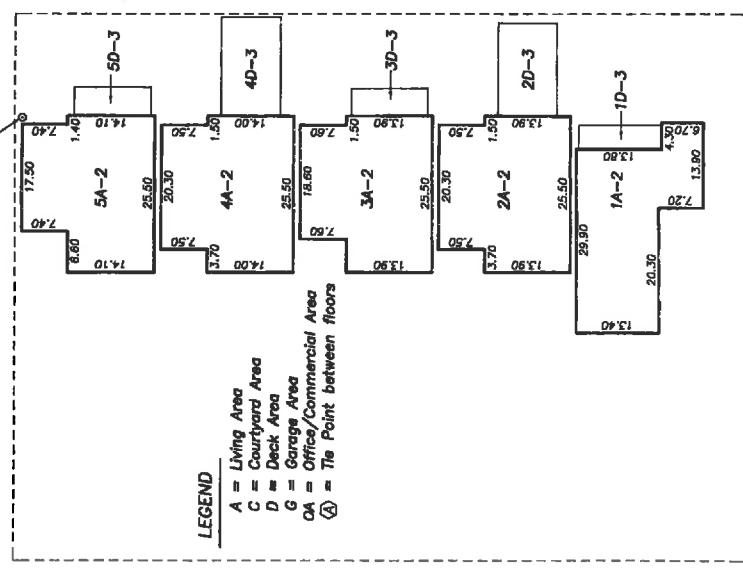
CARRILLO ST



First Level (Ground Floor)



Second Level



Third Level

LEGEND
 A = Living Area
 C = Courtyard Area
 D = Deck Area
 G = Garage Area
 OA = Office/Commercial Area
 (A) = The Point between floors

NOTICE
 Assessor Parcels are for tax assessment purposes only and do not indicate either parcel legality or a valid building site.

30

City of Santa Barbara
 Assessor's Map Bk, 029-Pg, 59
 County of Santa Barbara, Calif.

12/09/2005 R.M. Bk. 196, Pg. 41-46, Tract 20666 Condominium Plan for Lot 1, "La Aldea"

LD/06

301-07 this new pg 59